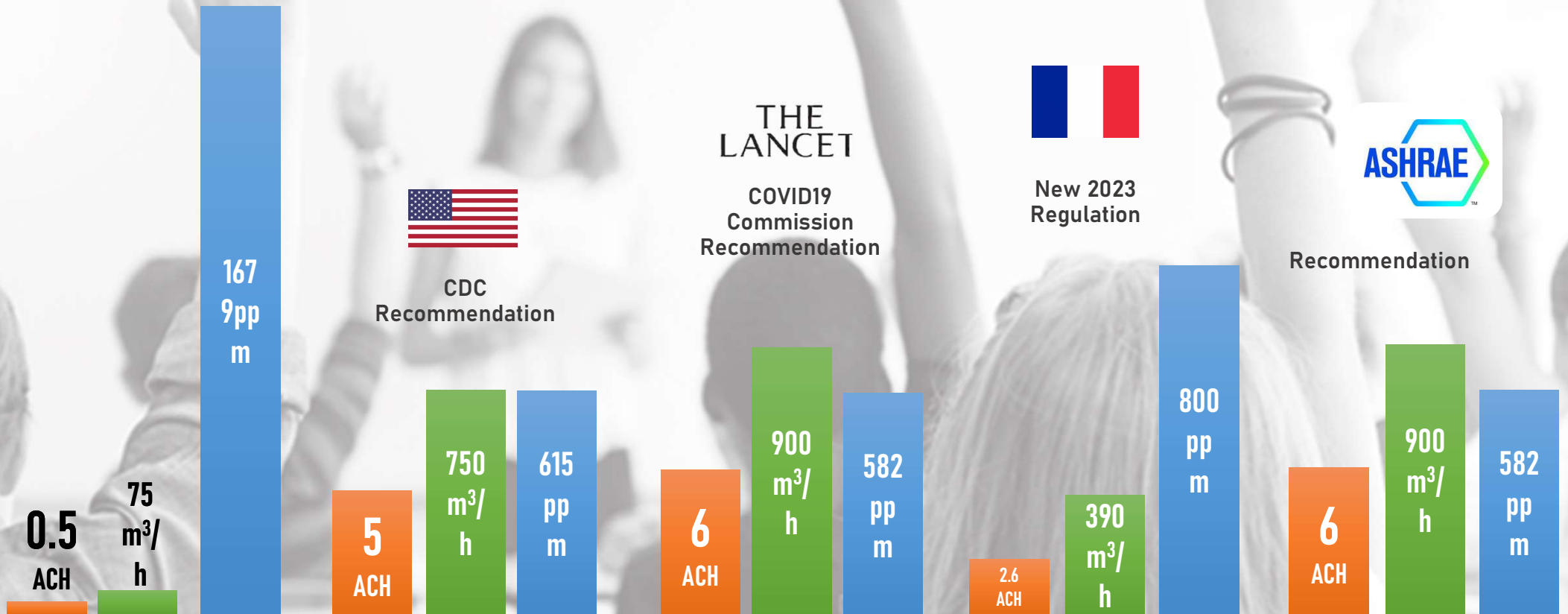




AIR CHANGE PER HOUR, AIRFLOW AND CO2 LEVELS* IN SCHOOLS WITH 6M2 PER CHILD

* CO2 levels after 2 hours - updated 12.03.2024

Classroom
poorly ventilated





Air Change Per Hour In Schools For A Classroom With 2m² Per Child

updated 14.05.2023



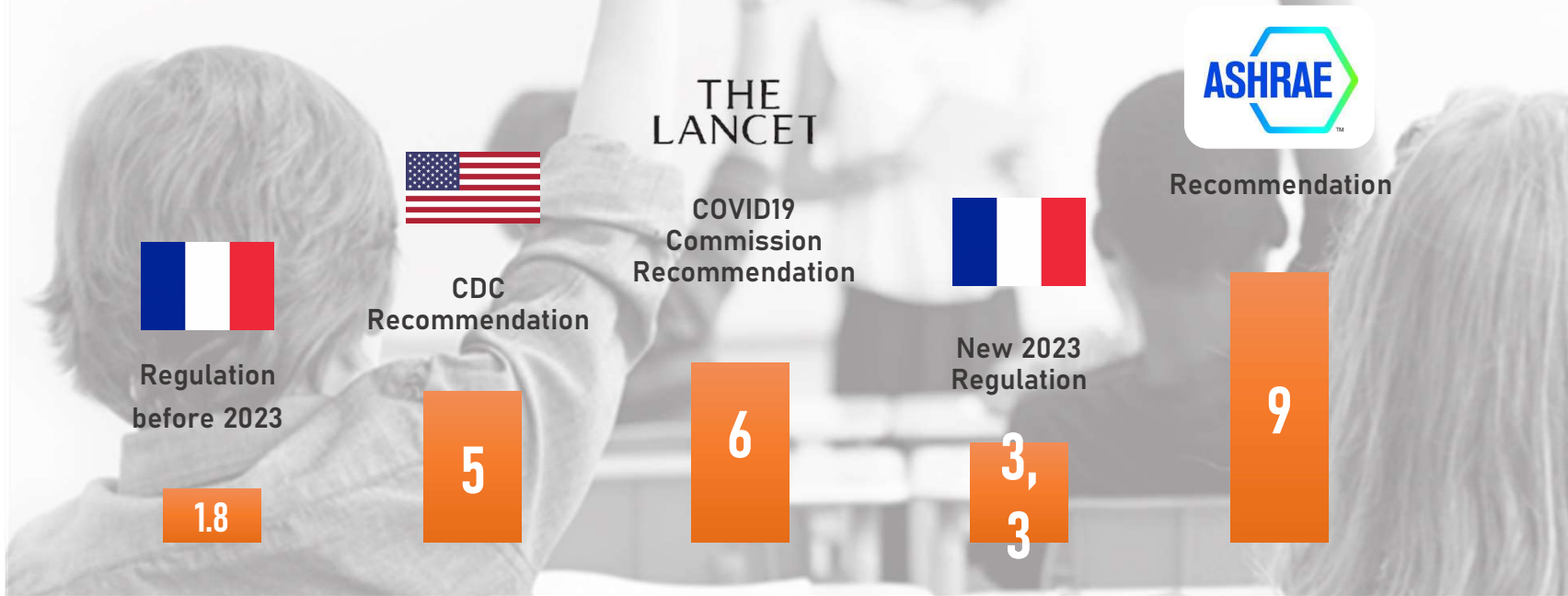
Highest Recommendation





Air Change per Hour in Schools for a classroom with 4m² per child

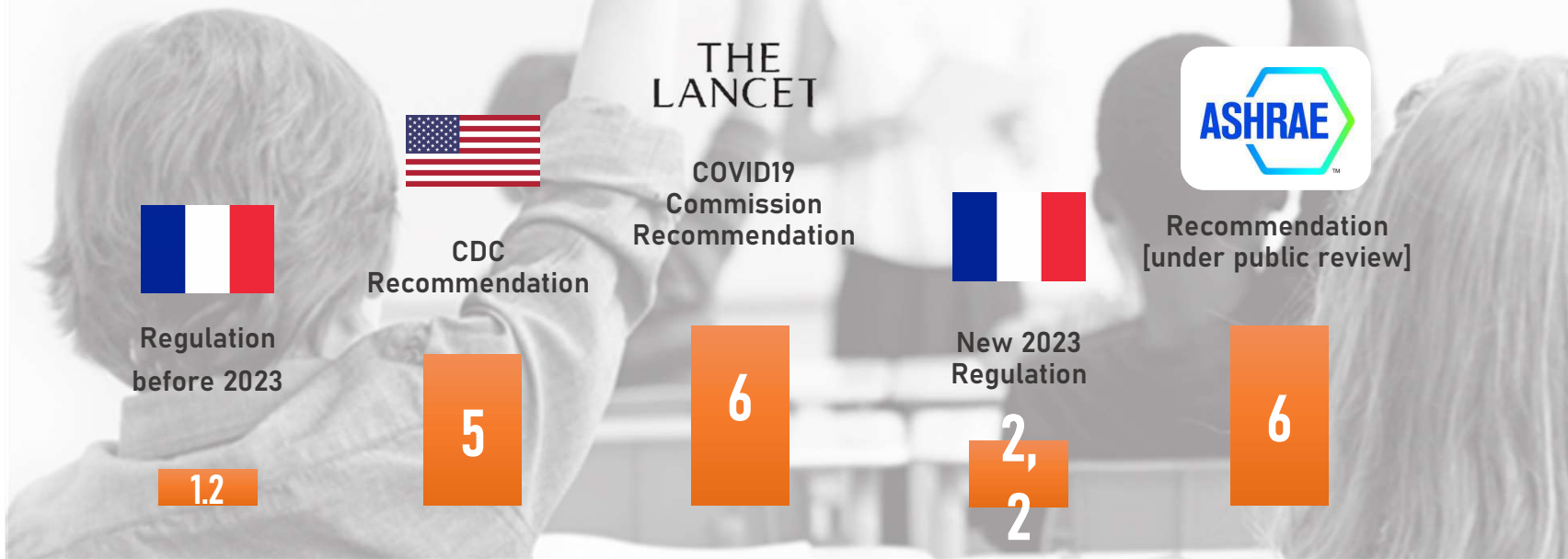
updated 14.05.2023





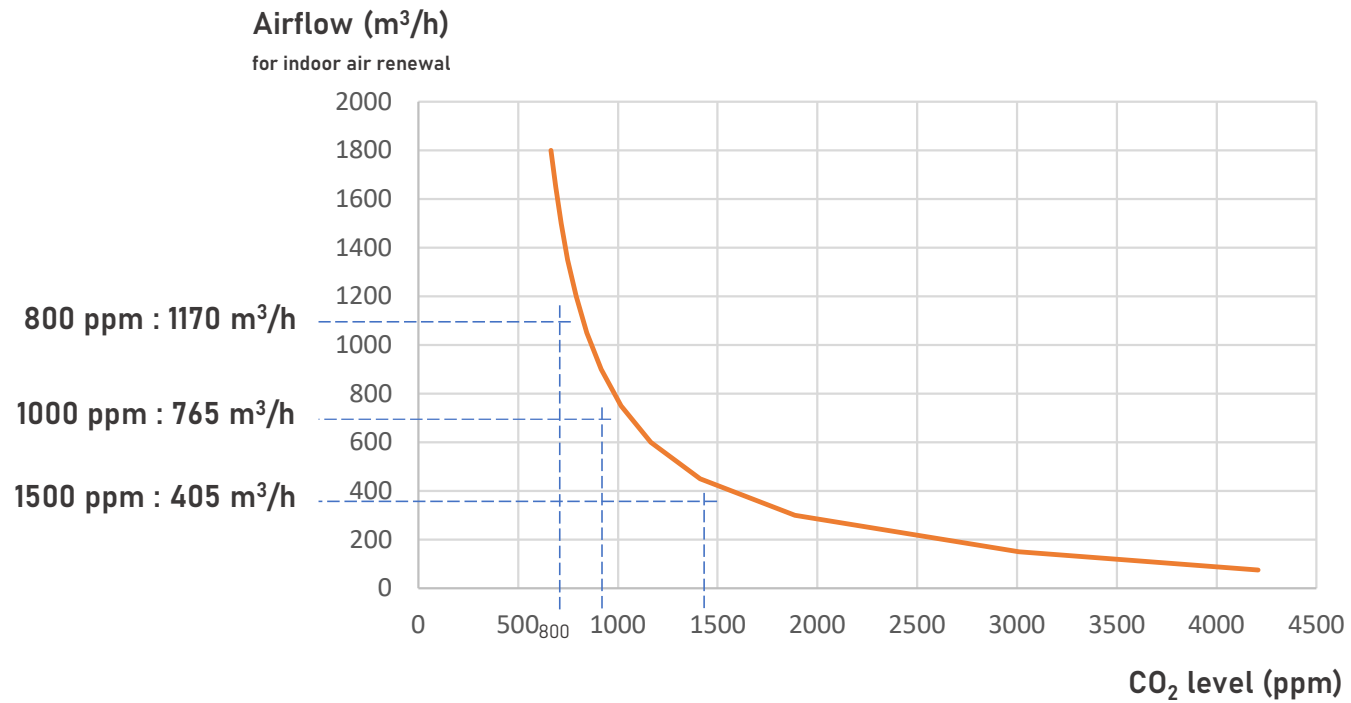
Air Change per Hour in Schools for a classroom with 6m² per child

updated 14.05.2023





Relationship between CO₂ levels and Airflows for a 60 m² classroom and 30 students





Relationship between CO₂ levels and Airflows for a 60 m² classroom and 30 students

